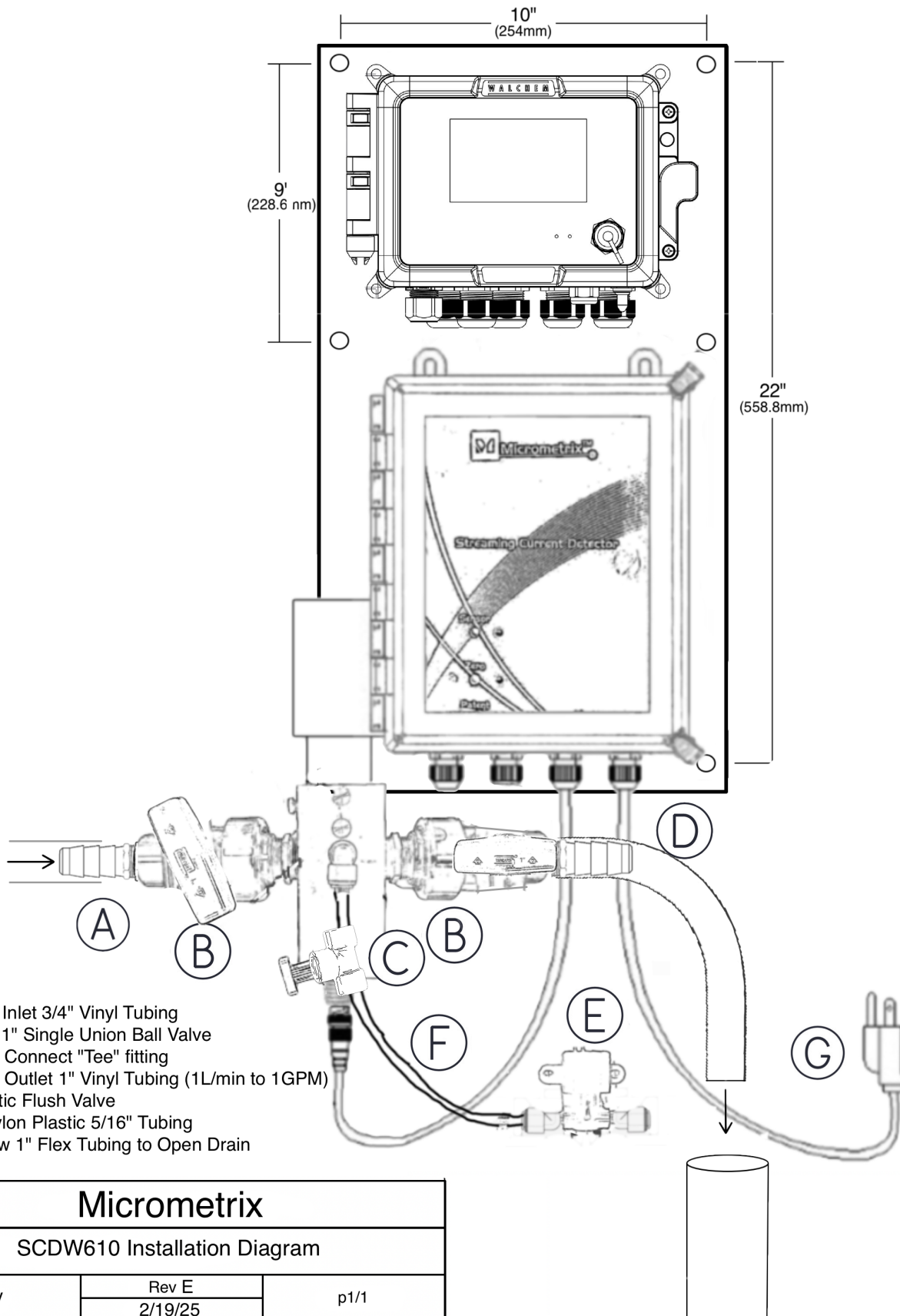


*Shown With Auto Clean Option



- A - Sample Inlet 3/4" Vinyl Tubing
- B - Manual 1" Single Union Ball Valve
- C - Push to Connect "Tee" fitting
- D - Sample Outlet 1" Vinyl Tubing (1L/min to 1GPM)
- E - Automatic Flush Valve
- F - Hard Nylon Plastic 5/16" Tubing
- G - Overflow 1" Flex Tubing to Open Drain

Micrometrix

SCDW610 Installation Diagram

CAV

Rev E
2/19/25

p1/1